

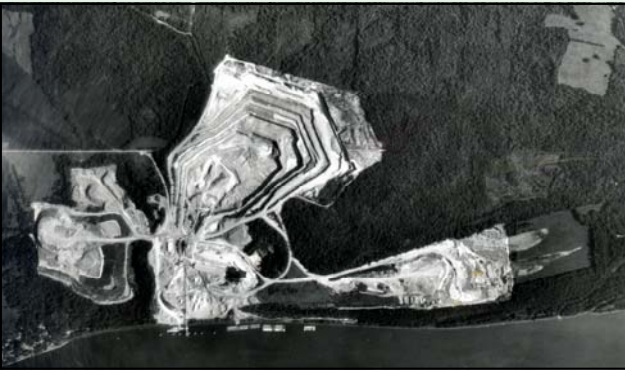
Who is Lafarge?

Lafarge is a world leader in building materials, with top-ranking positions in all its businesses: Cement, Aggregates & Concrete, and Gypsum. Lafarge currently employs 71,000 people and operates in more than 70 countries with sales of 17 billion euros in 2006.

Lafarge is listed on the Paris and New York stock exchanges.

Lafarge has been committed to sustainable development for many years, pursuing a strategy that combines industrial know-how with performance, value creation, respect for employees and local cultures, environmental protection and the conservation of natural resources and energy.

Lafarge is the only company in the construction materials sector to be listed in the 2007 '100 Global Most Sustainable Corporations in the World'.



An aerial view of Cave-In-Rock Quarry

To learn more about Lafarge in North America and some of our recent community and environmental initiatives, please view the [Our Communities, Our Environment](#) report at www.lafargenorthamerica.com.

Environmental/Community Relations Projects



Potential enhancements include nest platforms for bald eagles & nest boxes for wood ducks

Cave-In-Rock Quarry is participating in "Wildlife at Work," a Wildlife Habitat Council's (WHC) worksite based program that focuses on involving company employees, community members, conservation organizations, and government agencies in the long-term, active management of company property to improve wildlife habitat and raise environmental awareness. The WHC helps large landowners, particularly corporations, manage their unused lands in an ecologically sensitive manner for the benefit of wildlife. The program involves a site visit by a wildlife biologist that makes recommendations for wildlife enhancement projects. Once a decision is made by the wildlife team on which projects to implement, a management plan is written that outlines the goals, objectives and prescriptions for the site, along with a monitoring plan to track progress. On-going site inventories are conducted to identify species of plants and animals inhabiting the site. After the projects have been in place and monitored for at least one year, the site is eligible for certification. Some of the potential projects for Cave-In-Rock Quarry are:

- ☼ Identify and manage exotic, invasive species
- ☼ Quality deer management
- ☼ Establish wildflower meadow at entrance
- ☼ Establish native warm-season grasses in fields
- ☼ Provide artificial nesting structures for birds



Cave-In-Rock Quarry



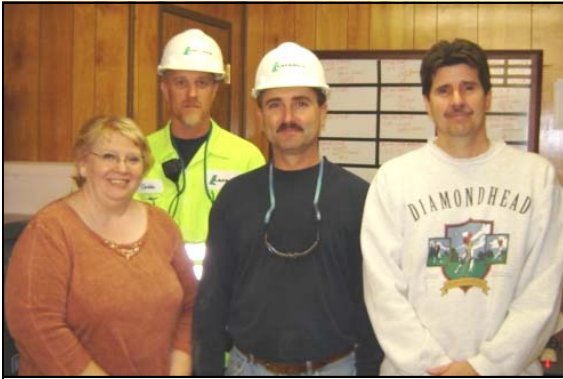
Community Newsletter

Spring 2007

Lafarge Aggregates Southeast Inc.
Cave-In-Rock Quarry
Route 1 Box 267
Cave In Rock, IL 62919

www.lafargenorthamerica.com
www.lafarge.com

Introduction



From left: Cathy Price, Curtis Jenkins, Tony Cinkovich and Brad Adkins

Hello, we are part of the Lafarge Cave-In-Rock Quarry Team. The purpose of this, our first newsletter, is to introduce our employees and our company to the community. We strive to be good neighbors and to be an asset to the community.

Cave-In-Rock Quarry has had a long and diverse history. It first started operations in the early 1960s under the ownership of Missouri Portland Cement Company for the purpose of mining limestone to be used in the cement-making process.

In the mid-1980s, Cementia purchased Missouri Portland Cement Company, and the quarry was temporarily closed. Dravo signed a contract with Cementia to operate the quarry, and it restarted in 1986 with plans to produce both cement grade limestone and aggregates suitable for construction materials and road building.

Lafarge purchased Cementia in 1991 obtaining the ownership of the Cave-In-Rock Quarry. And then in 1995 Martin Marietta Materials acquired Dravo along with the contract to operate the quarry.

During the time period from the mid-1980's until present, the business grew from about 300,000 tons per year to almost 3 million.




On September 15, 2006 the contract held by Martin Marietta Materials expired, and Lafarge resumed operational control of the Cave-In-Rock Quarry that it had owned since 1991.

Today on its 2000-acre site, Cave-In-Rock Quarry provides limestone by river barge to our Joppa Cement Plant, and is producing construction aggregates to service local markets and regional river markets.

Environmental Excellence

Lafarge's Cave-In-Rock Quarry strives to be a good environmental steward. To aid in this, we have developed an Environmental Management System (EMS) that is "beyond compliance" focused. We strive to do even better than what's required by law.

Our environmental goals for 2007 include:

-  Complete the cleanup of the dump site at the cemetery
-  Participate in Wildlife Habitat Council (see back panel)
-  Host a community "Tire Collection Day" (date TBD)



The quarry is regulated by the Illinois Department of Natural Resources, Environmental Protection Agency (IDNR, IEPA), which imposes rules on all aspects of our mining operations: air quality, storm water and process water, surface mining, etc. These state rules ensure that federal environmental standards are met. The quarry maintains permits for these categories, each of which has many conditions attached. In addition to random IDNR/IEPA inspections, Lafarge performs internal environmental audits annually.

To ensure proper air quality, water spray and bag house techniques are used to keep dust to a minimum. Routine inspections of the dust suppression systems are done to ensure that everything is working properly.



Part of new crushing and screening plant with dust controls being installed by Lafarge



Overview of pit - several different geologic formations are mined

Storm water quality is routinely monitored and inspections are performed to ensure that best management practices are followed to minimize our impacts to storm water run-off. Lafarge is working with a consultant to develop a storm water pollution prevention plan that takes into consideration the floodway of the Ohio River.

Process water discharged from the site is monitored and must meet stringent requirements to ensure water quality in the Ohio River is protected. The site also has an IDNR approved mine plan that maps out the mining process and controls to be used as the mine progresses. Surety bonds are in place with IDNR to ensure reclamation after mining ceases.

Seismographs monitor all blasts for vibration and air pressure. Lafarge self imposes more stringent requirements than those imposed by the IDNR, Mine Safety and Training Division who regulates blasting.

Lafarge and its predecessors have taken significant care to maintain a visually appealing and landscaped entrance to the quarry. Cave-In-Rock residents can be sure that Lafarge will continue to take appropriate measures to ensure the property is maintained in a respectable condition.

Let us know how we're doing. Your input is important to us.

Les Moore, Plant Manager
(618) 289-3404 ext. 101

Jim Camp, Project Manager
(618) 289-3404 ext. 100